

# *Missa Nova*

Service music for Christian worship

*Composed by*

Jeffry Hamilton Steele

*for*

Cantor, SATB choir and congregation  
with classical guitar accompaniment

*organ/keyboard optional*

- 1 Kyrie
- 3 Gloria
- 5 Alleluia
- 7 Sanctus
- 11 Memorial Acclamation
- 13 Agnus Dei
- 15 Congregation's part (*as printed  
in Missal/Order of Service*)

This Mass — which takes its name from the *Bossa Nova* style to which it pays tribute — is ideally performed with a classical guitarist (amplified), choir and cantor (or singing celebrant). If a steel-string guitarist (who cannot read notation) is accompanying, he/she may follow the chord symbols (though perhaps it will take a jazz guitarist to know how to finger some of them) Ideally, though, the guitar part should be rendered as notated. Keyboard players may read the guitar part, filling it out to taste. Organists, however, are best utilized doubling the vocal lines, particularly in the *Alleluia*. The texts alternate between Latin and English, with the cantor/celebrant/choir usually assigned the Latin words and the congregation echoing in English. One exception is the *Agnus Dei*, where the congregation sings Latin for the three verse repetitions while the choir weaves a counterpoint in English.

The composer would be willing to intabulate the guitar part, if requested, as well as arrange complementary parts for melody instruments. Consider this music "shareware" — that is, if you end up using it, send me whatever you might have paid a publisher for something similar. I may also be available to perform the guitar part.

Your feedback is appreciated.

*Jeffry Steele*  
978-282-3106  
music@jeffrysteele.com  
1111 Washington #R  
Gloucester MA 01930

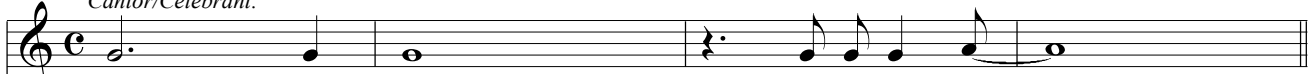
Missa Nova

# Kyrie

Jeffry Hamilton Steele

♩ = 80

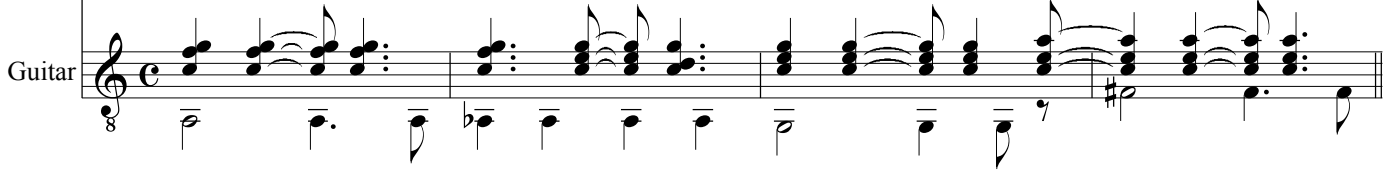
Cantor/Celebrant:



Musical notation for the Cantor/Celebrant part, measures 1-4. The melody is written in treble clef, common time, and consists of quarter and eighth notes.

Ky - - - ri - e e - le - i - son.

F&9/A Fm9/A<sup>b</sup> C/G F#<sup>o</sup>7



Guitar accompaniment for the Cantor/Celebrant part, measures 1-4. The guitar part is written in treble clef, common time, and features a rhythmic pattern of eighth and quarter notes with various chord voicings.

5 Choir/Congregation:



Musical notation for the Choir/Congregation part, measures 5-8. The melody is written in treble clef, common time, and consists of quarter and eighth notes.

Lord, have mer - cy on us.



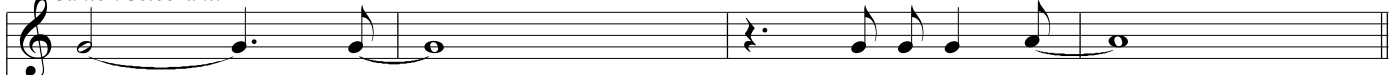
Musical notation for the Choir/Congregation part, measures 5-8. The bass line is written in bass clef, common time, and consists of quarter and eighth notes.

F5/9 G7sus4 G7 Em C/B<sup>b</sup>



Guitar accompaniment for the Choir/Congregation part, measures 5-8. The guitar part is written in treble clef, common time, and features a rhythmic pattern of eighth and quarter notes with various chord voicings.

9 Cantor/Celebrant:



Musical notation for the Cantor/Celebrant part, measures 9-12. The melody is written in treble clef, common time, and consists of quarter and eighth notes.

Chri - - - ste e - le - i - son.

F&9/A Fm9/A<sup>b</sup> G/C F#<sup>o</sup>7



Guitar accompaniment for the Cantor/Celebrant part, measures 9-12. The guitar part is written in treble clef, common time, and features a rhythmic pattern of eighth and quarter notes with various chord voicings.

13 *Choir/Congregation:*

Christ have mer - cy on us. Christ have mer - cy...

F5/9 G7sus4 G7 Em C/Bb

Detailed description: This system contains measures 13 through 16. The vocal line (treble clef) has a half note 'Christ' in measure 13, followed by quarter notes 'have', 'mer - cy', and 'on' in measures 14, 15, and 16 respectively. A long note 'us.' spans measures 16 and 17. In measure 17, the vocal line has a half note 'Christ', followed by quarter notes 'have', 'mer - cy...' in measures 18, 19, and 20. The bass line (bass clef) provides accompaniment with chords and moving lines. The piano accompaniment (treble clef) features chords and arpeggiated patterns. Chord symbols are placed above the piano part: F5/9, G7sus4, G7, Em, and C/Bb.

17 *Choir/Celebrant/Cantor:*

Ky - - - ri - e e - le - i - son.

F&9/A Fm9/Ab C/G F#o7

Detailed description: This system contains measures 17 through 20. The vocal line (treble clef) has a half note 'Ky - - - ri - e' in measure 17, followed by quarter notes 'e - le - i - son.' in measures 18, 19, and 20. The bass line (bass clef) provides accompaniment. The piano accompaniment (treble clef) features chords and arpeggiated patterns. Chord symbols are placed above the piano part: F&9/A, Fm9/Ab, C/G, and F#o7.

21 *Choir/Congregation:*

Lord, have mer - cy on us.

F5/9 G7sus4 G7 AbΔ7 Gm/Bb C

Detailed description: This system contains measures 21 through 24. The vocal line (treble clef) has a half note 'Lord,' in measure 21, followed by quarter notes 'have', 'mer - cy', and 'on' in measures 22, 23, and 24 respectively. A long note 'us.' spans measures 24 and 25. The bass line (bass clef) provides accompaniment. The piano accompaniment (treble clef) features chords and arpeggiated patterns. Chord symbols are placed above the piano part: F5/9, G7sus4, G7, AbΔ7, Gm/Bb, and C.

Missa Nova  
**Gloria**

Jeffrey Hamilton Steele

$\bullet = 112$

*Cantor/Celebrant:*

**f** Glo - ri - a in ex - cel - sis De - o et in ter - ra pax ho -

G&9 C $\Delta$ 7 Em7 Em6 Am7 Am7/D G&9 C $\Delta$ 7 Em 7Em7 A7 Am7 Bm C $\Delta$ 7 D

6 *All:*

mi - ni - bus. Glo - ry to God in the high - est and peace to His peo - ple on earth!

E5 C $\Delta$ 7 D5 G&9 C $\Delta$ 7 Em6 Em7 A7sus4 A7 C Bm/D E5 D5 G&9 C $\Delta$ 7

11 *mp*

Lord God hea - ven - ly king, al - migh - ty God and fa - ther, we

Em7 Em6 Am7 Am7/D F $\Delta$ 7 Am/G Am B $\flat$  $\Delta$ 7 G9sus4 G

16 *mf*

wor - ship you, we give you thanks, we praise you for your glo - ry. *mf* Lord God, Lamb of God, you

F $\Delta$ 7 Am/G Am E7sus4/B E7 A2 Em/G

*mf*

21

take-a-way the sins of the world have mer-cy on us. You are sea-ted at the right hand of the Fa-ther

A2/F# FΔ7 CΔ7 D5 B♭Δ7 E♭/G F Gm7/FD/F# A2 Em/G A2/F# FΔ7

26

re - ceive our prayer. *p* For you a-lone are the

CΔ7 D5 B♭Δ7 E♭/G F Gm7/FD/F# G&9 CΔ7 Em7 Em6 Am7 Am7/D Gm6

*f* *p*

31

Ho-ly One. You a - lone are the Lord. You a - lone are the most high Je - sus

Dm Gm6 B♭Δ7 Gm6 C&9

*cresc. poco a poco*

36

Christ, with the Ho - ly Spi-rit in the *f* glo - ry of God the Fa - ther. A - men.

B♭Δ7 Am7 Gm7 A♭Δ7(♭5) G&9

*f*

# Missa Nova Alleluia

Jeffry Hamilton Steele

♩ = 152

Al - le - lu - ia      Al - le - lu - ia      Al - le - lu - ia      Al -

Al - le - lu - ia      Al - le - lu      Al - le - lu - ia      Al - le - lu  
Al - - - - le - lu - ia      Al - le - lu      Al - le - lu - ia

Al - le - lu - ia      Al - le - lu - ia      Al - le - lu      Al - le - lu

F/A      B $\emptyset$ 7      E7      Am      Dm7      G9

le - lu - ia      Al - le - lu - ia      Al - le - lu - ia

Al - le - lu - ia      Al - le - lu      Al - le - lu      Al - le - lu - Al - - -  
Al - le - lu      Al - le - lu      Al - le - lu - ia      Al - le - lu      Al - le - lu -

Al - le - lu      Al - le - lu      Al - - - - le - lu - ia      Al - le - lu -

Em      C7sus4      C7      F      B $\emptyset$ 7/F      E      Am

Al - le - lu - ia      Al - le - lu - ia      1."I am the way to the  
2."My sheep lis-ten to my

le - lu - ia      Al - le - lu - ia      Ah - - - -

ia      Al - le - le      Al - le - lu - ia

ia      Al - le - lu      Al - le - lu - ia

Dm      1.G      C      E7      Am      C $\Delta$ 7/G

19 truth and the life; on - ly through me can one come to the Fa - ther."  
voice," says the Lord. "I know them and they fol - low me."

Ah - - - - -

Al - le -

F C Em Am B<sup>b</sup>

24 ia Al - le - lu - - ia.  
Al - le - lu - ia Al - le - lu Al - le lu - ia.  
Al - le - lu - ia Al - le - lu Al - le - lu - ia.

lu - ia ia Al - le - lu Al - le - lu - ia.

G <sup>2</sup>G A<sup>b</sup>Δ7 B<sup>b</sup>6 C

Missa Nova  
**Sanctus**

Jeffry Hamilton Steele

♩ = 172

A/B Em9 A/B A13sus4 A/B A6 E7sus4 A6 A/B

*mp*

8 *Choir:*

Sanc - tus, sanc - tus, sanc - tus

E7sus4 Dsus4/A F#m/B E7sus4 Dsus4/A A/B Em9 A/B A13sus4

15 *All:*

Do - mi-nus De - us sa - ba-oth Ho - ly,

A/B A6 E7sus4 A6 A/B E7sus4 Dsus4/A F#m/B E7sus4 Dsus4/A A/B

22

ho - ly, ho - ly Lord, God of pow'r and might.

Em9 A/B A13sus4 A/B A6 E7sus4 A6 F#7 C/F



29 *Choir:*

Ple - - ni sunt coe - li et ter - ra

Am/G E sus4/G FΔ7 C/F A m/G E sus4/G FΔ7

8

36 *All:*

glo - ri - a tu - a. Hea - - ven and earth are

C/F E7 E7,9 E7 E7,9 FΔ7 C/F A m/G E sus4/G

8

43 *Choir:*

full of your glo - ry. Ho - san - na in ex - cel - sis!

FΔ7 G6 A&9 FΔ11 FΔ7

*f*

50 *All:* *Choir:*

Ho - san - na in the high - est! Be - ne - dic - - tus qui

G/D A&9 FΔ11 FΔ7 G/D E A&9

8

57 *All:*  
 ve - nit in no - - mi - ne Do - mi-ni. Blest is

E/G# D&9/F# E7 E A&9

64 *Choir:* Ho -  
 he who comes in the name of the Lord. *ff* Ho -

E/G# D&9/F# G/D *ff* Ho -

71 *All:* Ho - san - na in the high - est!  
 san - na in ex - cel - sis! Ho - san - na in the high - est!

A&9 F△11 F△7 G/D A&9 F△11 F△7

78 Ho - san - - - - na!

est Ho - san - na in the high - est!

G/D A&9 B $\flat$  $\Delta$ 7( $\flat$ 5) E $\flat$  $\Delta$ 7( $\flat$ 5) D&9

# Memorial Acclamations

## A:

Jeffrey Hamilton Steele

$\bullet = 80$

Christ has died. Christ is ri-sen.

F&9/A Fm9/A $\flat$  C/G

Christ will come a - gain.

F5/9 G7sus4 G7 E $\Delta$ 9

**B:**

♩ = 80

Dy-ing you de - stroyed our death. Ri - sing you re-stored our life.

F&9/A Fm9/A<sup>b</sup> C/G F#°7

Lord Je - sus, come in glo-ry.

F5/9 G7sus4 G7 CΔ9

**C:**

♩ = 80

When we eat this bread and drink this cup, we pro - claim your death, Lord Je - sus,

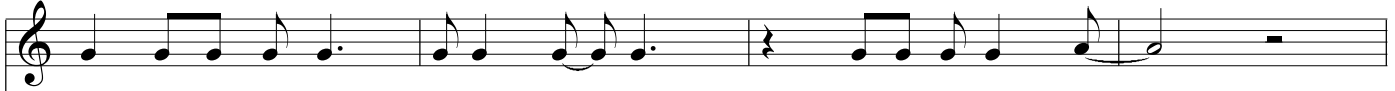
F&9/A Fm9/A<sup>b</sup> C/G F#°7

un - til you come in glo - ry.

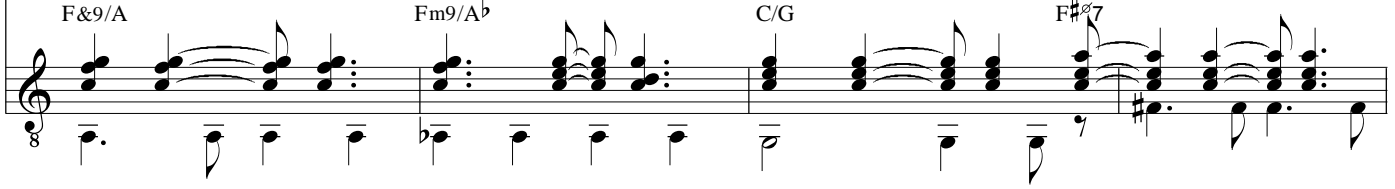
F5/9 G7sus4 G7 Am&11

# D:

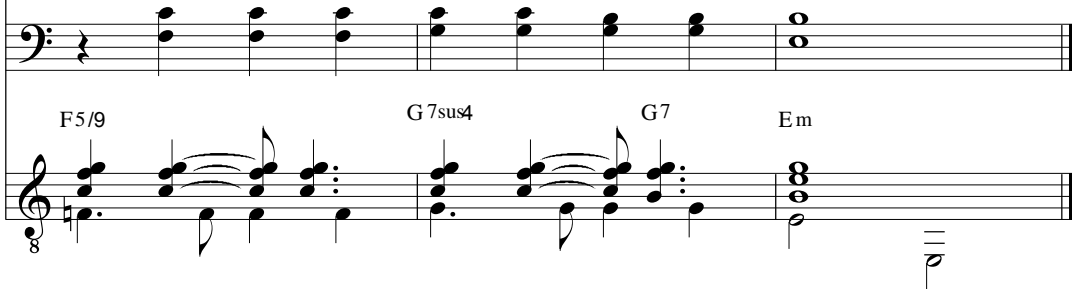
♩ = 80



Lord, by your cross and re-sur - rec - tion you have set us free.

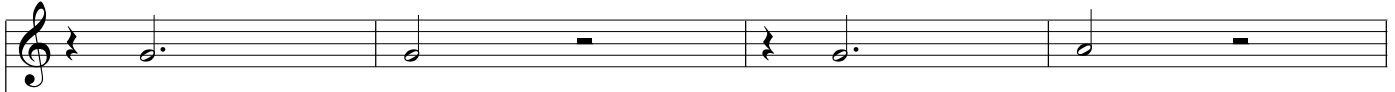


You are the sa - vior of the world.

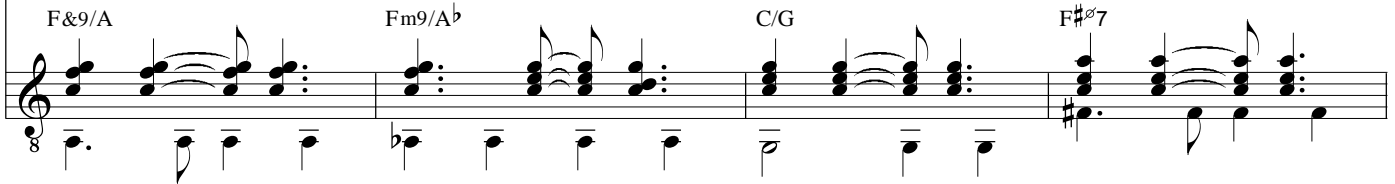


# Amen

♩ = 80



A - - - - men, a - - - - men,



a - - - - - men.



Missa Nova  
**Agnus Dei**

Jeffry Hamilton Steele

*Plaintive*

♩ = 82

Musical notation for measures 8-9, featuring a treble clef and a bass clef with a 6/8 time signature.

9 *All:*

Ag-nus De - i qui tol-lis pe-cat-ta mun-di mi - se - re - re no -

Musical notation for measures 9-15, including vocal lines and piano accompaniment.

16 *S/Congregation:* Ag - nus De - i qui tol - lis pe-cat - ta

*Choir:* bis. Je - sus lamb of God who takes a - - -

Dm Dm7 Gm6 A7sus4 Am7

Musical notation for measures 16-19, including vocal lines and piano accompaniment with chord symbols.

20 mun - di mi - - - se - re - re no - - - -

way the sins of the earth, have mer - cy on us

FΔ7 EbΔ7 BbΔ7 EbΔ7 Cm7

Musical notation for measures 20-23, including vocal lines and piano accompaniment with chord symbols.

24 bis. Ag - nus De - i qui tol - lis pe-cat - ta  
Oh, Je - sus, lamb of God who takes a - -

D sus4 D Dm Dm7 Gm6 A7sus4 A7

28 mun - di do - - - na no - bis pa - - - cem.  
way the sins of the earth, grant us peace.

BbΔ7 EbΔ7 AbΔ7 Db7(b5) Am7

**Kyrie**

Jeffry Hamilton Steele

*Cantor/Celebrant:* Ky - ri - e e - le - i - son. *All:* Lord, have mer-cy on us.

*Cantor/Celebrant:* Chri - ste e - le - i - son. *All:* Christ have mer-cy on us.

*Cantor/Celebrant/Choir:* Ky - ri - e e - le - i - son. *All:* Lord, have mer-cy on us.

**Gloria**

*Cantor/Celebrant:* Glo - ri - a in ex-cel-sis De - o et in ter - ra pax ho - mi-ni-bus.

*All:* Glo-ry to God in the high-est and peace to His peo-ple on earth! Lord God hea-ven - ly

king, al - migh - ty God and fa - ther, we wor-ship you, we give you thanks, we

praise you for your glo - ry. Lord God, Lamb of God, you take a - way the sins of the

world have mer-cy on us. You are sea-ted at the right hand of the Fa-ther re -

ceive our prayer. For you a-lone are the Ho-ly One. You a - lone are the Lord. You a -

lone are the most high Je - sus Christ, with the Ho-ly Spi-rit in the glo-ry of God the Fa-ther. A - men.



# Alleluia

*Cantor/Celebrant/Choir:*

Al - le - lu - ia Al - le - lu - ia Al - le - lu - ia Al - le - lu -

*All:*

ia Al - le - lu - ia Al - le - lu - ia Al - le - lu - ia Al -

le - lu - ia 1. 8 2. ia.

# Sanctus

**10** *Cantor/Celebrant (Choir):*

Sanc - tus, sanc - tus, sanc - tus Do - minus De - us sa - baoth

*All:*

Ho - ly, ho - ly, ho - ly Lord, God of pow'r and

**3** *Cantor/Celebrant (Choir):*

might. Ple - ni sunt coe - li et ter - ra

*All:*

glo - ri - a tu - a. Hea - ven and earth are full

*Cantor/Celebrant (Choir):*

*All:*

of your glo - ry. Ho - san - na in ex - cel - sis! Ho -

*Choir:*

san - na in the high - est! Be - ne - dic - tus qui ve - nit

*All:*

in no - mi - ne Do - mi - ni. Blest is he who comes

*Choir:*

in the name of the Lord. Ho - san - na in ex -

*All:*

cel - sis! Ho - san - na in the high - est! Ho - san -

na!

## Memorial Acclamations

*A:*

Christ has died. Christ is risen. Christ will come a - gain.

*B:*

Dy-ing you de - stroyed our death. Ri - sing you re-stored our life.

Lord Je-sus, come in glo-ry.

*C:*

When we eat this bread and drinkthis cup, we pro - claim your death, Lord Je -

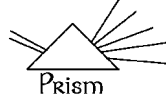
sus, un - til you come in glo - ry.

*D:*

Lord, by your cross and re - sur - rec - tion you have set us free.



# Prism Music



## Current Sheet Music Titles:

### SOLO GUITAR

#### *From the Piano*

BACH Prelude in C  
CHOPIN Preludes 4 (2 versions)&15  
DEBUSSY The Girl with the Flaxen Hair  
STRAVINSKY Les Cinq Doigts

#### *Third Cello Suite* (6 movements) J.S. Bach

#### *Second Violin Partita* (5 movements)

#### *Sin Palabras* (music originally for voice)

ENGLAND Agnus Dei 1310  
JOSQUIN Mille Regretz  
BACH "Passion" Chorale  
RICHARD WAGNER Wotan's Farewell  
ISRAEL Erev Shel Shoshanim  
SILVIO RODRIGUEZ Unicornio/Rabo de Nube  
SALVADOR CARDENAL BARQUERO Para Amarnos con el Mundo

#### *Semper Dowland* John Dowland

25 newly arranged works by the English Renaissance master

#### *Voice of Creation* Jeffry Hamilton Steele

Four pieces, one with synthesizer accompaniment

### GUITAR DUET

#### *Missa Pange Lingua* (5 movements) Josquin des Préz (c.1440-1521)

#### *Missa Hercules* (5 movements) Josquin des Préz

### GUITAR WITH VOICES AND/OR OTHER INSTRUMENTS

#### *Clear Away: A Fisherman's Farewell* Jeffry Hamilton Steele

#### *The Clear Away Songbook* Jeffry Hamilton Steele

#### *Gift of Vision* Jeffry Hamilton Steele

(A Dance Oratorio for five voices with guitar)

#### CD recordings by Jeffry Hamilton Steele:

J. S. PLAYS BACH (2001)  
*Two contrasting works by J. S. Bach*

FROM DOWLAND TO SILVIO (2000)  
*Transcriptions for guitar; also including Bach, Chopin & Stravinsky*

FLAME WITHOUT END (2000)  
*Original songs & instrumentals*

GUITARA ILLUMINATA (1997)  
*The Music of Josquin des Préz*

DREAM COLORS (1993)  
*Relaxation music for synthesizers & guitars*

WE WERE ALL POETS... (1992)  
*Music for theater & television on electric & classical guitars with synthesizers*